

GARDEN BUMBLEBEE
(*Bombus hortorum*)



6

Queen emergence: Late (April onwards)
Tongue length: Long (~13mm)
Cuckoo host?: Y (*Bombus barbutellus*)



TREE BUMBLEBEE
(*Bombus hypnorum*)



4

Queen emergence: Mid (March onwards)
Tongue length: Short (~6mm)
Cuckoo host?: N



RED-TAILED BUMBLEBEE
(*Bombus lapidarius*)




5

Queen emergence: Mid (March onwards)
Tongue length: Medium (~8mm)
Cuckoo host?: Y (*Bombus rupestris*)




COMMON CARDER BEE
(*Bombus pascuorum*)



3

Queen emergence: Mid (March onwards)
Tongue length: Long (~9mm)
Cuckoo host?: Y (*Bombus campestris*)

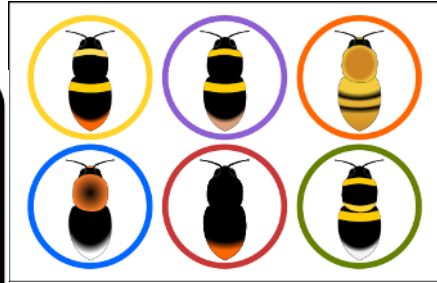


EARLY BUMBLEBEE
(*Bombus pratorum*)



1

Queen emergence: Early (February onwards)
Tongue length: Medium (~7mm)
Cuckoo host?: Y (*Bombus sylvestris*)

BUFF-TAILED BUMBLEBEE
(*Bombus terrestris*)



2

Queen emergence: Early (February onwards)
Tongue length: Medium (~8mm)
Cuckoo host?: Y (*Bombus vestalis*)

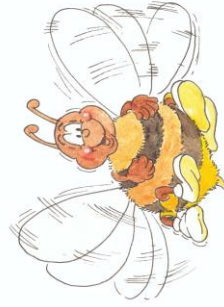


All the buzz...



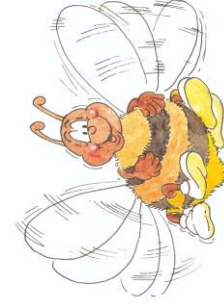
© SAW Trust 2017

All the buzz...



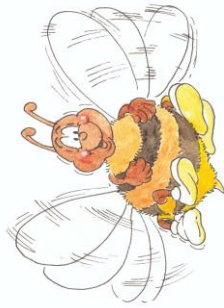
© SAW Trust 2017

All the buzz...



© SAW Trust 2017

All the buzz...



© SAW Trust 2017

All the buzz...



© SAW Trust 2017

All the buzz...



© SAW Trust 2017